

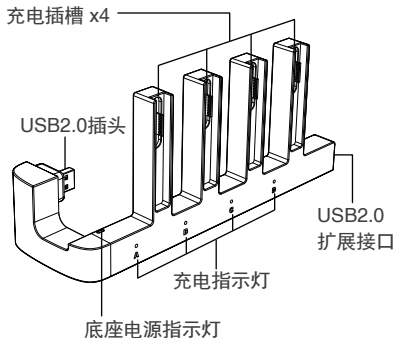
iopega®

派鲨鱼

## N-S 2蟒蛇四充

产品说明书(PG-SW2185)

### 产品图示:



### 产品特点:

1. 本产品是一款配合N-S 2原装底座使用的充电座, 用于N-S 2 Joypad手柄;
2. 配备4个充电插槽, 支持给1至4个Joypad手柄同时充电;
3. NS 2原装底座为产品提供电源输入;
4. 配备一个USB2.0扩展端口, 支持DC5V电源输出与数据传输功能(仅支持NS Pro手柄);
5. 配备充电指示灯, 实时显示手柄充电状态;
6. 使用场景: 与NS 2原装Joypad手柄及底座配合使用, 需使用NS 2原装电源适配器, 在室内无强磁环境下使用。

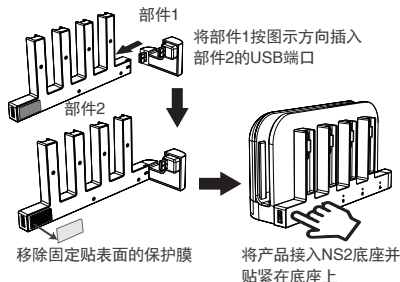
### 产品技术参数:

输入电压/电流: DC5V

单个手柄充电电流: 200mA

### 产品使用说明:

1. 将充电座的两个部件装配好, 移除主机固定贴表面的保护膜, 将充电座接入N-S 2原装底座, 并将产品贴紧在主机底座上。

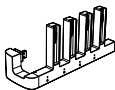


2. 产品通电后, 4个Joypad手柄插槽充电指示灯蓝色常亮;
3. 将Joypad手柄插入任意插槽进行充电, 充电时对应指示灯橙色常亮, 充满电后对应指示灯蓝色常亮;

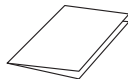
### 注意事项:

1. 请不要把本产品在潮湿或高温地方存储。
2. 请不要敲击、摔打、刺穿或试图去分解本产品, 以免对产品造成不必要的损害。
3. 非专业人员勿拆卸本产品, 否则不在售后保修服务内。
4. 请勿随意丢弃本产品, 须给有资质的机构回收。
5. 请勿用于其他非NS 2原装Joypad手柄充电。
6. 有线连接NS PRO手柄使用时, 需使用质量可靠的USB连接线, 以免发生连接不畅或断连。

### 产品清单:



充电座 x1



说明书 x1

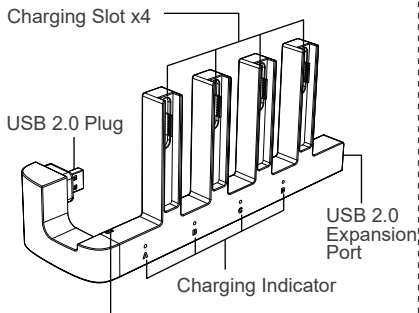
iopega®

派鲨鱼

## Charging Dock for NS 2 Joypad

Product Manual (PG-SW2185)

### Product Diagram:



NS 2 Dock Power Indicator

### Product Features:

1. This product is a charging dock used with the original NS 2 dock for the NS 2 Joypad controller;
2. Equipped with 4 charging slots, supporting charging 1 to 4 Joypad controllers simultaneously;
3. The original NS 2 dock provides power input for the product;
4. Equipped with a USB 2.0 expansion port, supporting DC5V power output and data transmission functions (supports only NS Pro controllers);
5. Equipped with 4 charging indicators to display the controller's charging status in real-time;
6. Usage scenario: Used with the original NS 2 Joypad controller and dock. It is necessary to use the original NS2 power adapter and use it indoors without a strong magnetic environment.

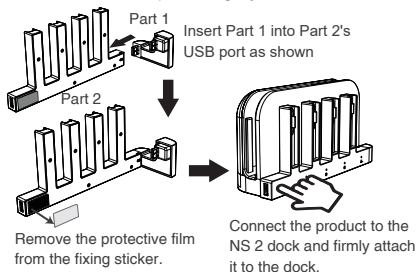
### Product Technical Parameters:

Input Voltage: DC5V

Single Controller Charging Current: 200mA

### Product Instructions:

1. Assemble the two parts of the charging dock, remove the protective film from the surface of the host fixing sticker, connect the charging dock to the original NS 2 dock, and attach the product tightly to the NS 2 dock.



2. After the product is powered on, the 4 Joypad controller slot charging indicators will light up blue;
3. Insert the Joypad controller into any slot for charging. The corresponding indicator light will be steady orange during charging, and the corresponding indicator light will be steady blue when fully charged;

### Notes:

Please do not store this product in a humid or high-temperature place.

Please do not knock, drop, puncture, or attempt to disassemble this product to avoid unnecessary damage to the product.

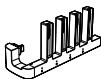
Non-professionals should not disassemble this product, otherwise, it will not be covered by the after-sales warranty service.

Please do not discard this product at will. It must be recycled by a qualified organization.

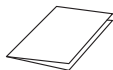
Do not use it for charging Joypad controllers other than the original NS 2.

When using a wired connection with the NS PRO controller, it is necessary to use a reliable USB cable to avoid poor connection or disconnection.

### Product List:



Charging Dock x1



User Manual x1