

PG-9078说明书 80g米黄色特种纸,双面折页 尺寸: 630x142mm



忍者蓝牙耳机手柄 产品说明书(PG-9078)中文版

适用说明:

- 1.非常感谢您购买ipega公司开发生产的忍者蓝牙耳机手柄;
2.产品主要适用于在Android/iOS/Win 7/8/10系统上蓝牙连接时,进行游戏操作时使用!
3.适用设备:智能手机/平板电脑/智能电视机、机顶盒/PC电脑;
4.LT/RT为模拟量功能,更加注重体验的细节,使游戏精准可控!

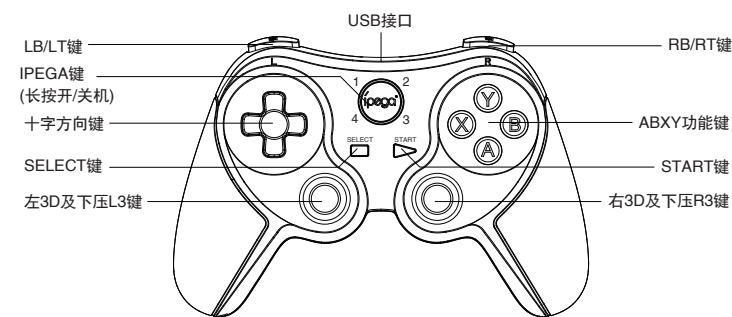
*因官方游戏平台软件升级或源代码变更等不可抗拒的因素造成部分游戏无法与本产品连接操作,我公司不承担任何责任。对此我公司保留最终解释权。

售后客服QQ群: 344494518
客服电话: 400-806-3006
在线时间: 周一至周五9:30-17:30

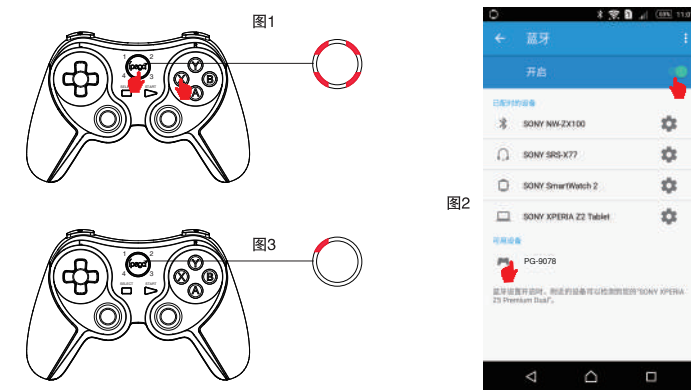


艾派特官方微信公众号(长按扫码 下载或关注公众号)

功能按键图示:



安卓设备使用说明:



- 1.同时按住X键和ipega键2秒,此时四个LED指示灯同时快闪,如图1
2.将Android设备端的蓝牙功能打开,点击“扫描”图2
3.当搜索到蓝牙名为“PG-9078”的设备名时,选择配对连接;图2
4.连接成功,LED1指示灯常亮!图3
5.手机扫描二维码下载游戏平台,进入平台下载所需要的游戏。

推荐游戏:

- 1.穿越火线:枪战王者
2.绝地求生:刺激战场/全军出击
3.王者荣耀
4.魂斗罗:归来
5.第五人格
6.荒野行动
7.小米枪战

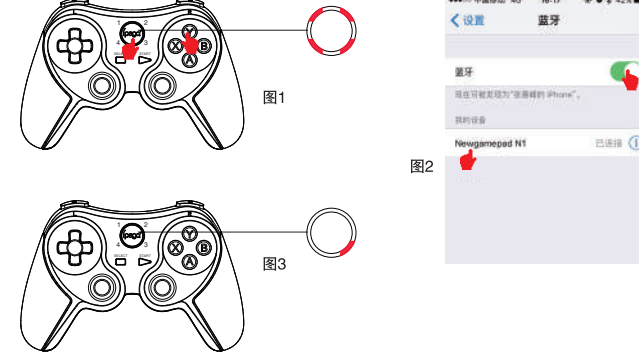


安卓游戏平台 下载二维码



安卓按键映射APP 下载二维码

iOS游戏大厅模式



支持iOS非越狱设备,支持第三方游戏平台,此模式仅限中国大陆地区使用

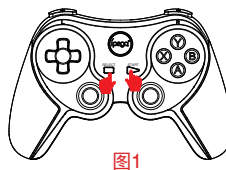
- 1.同时按住Y键和ipega键2秒,此时四个LED指示灯同时快闪,如图1
2.将iOS设备端的蓝牙功能打开,搜索到蓝牙名为“Newgamepad N1”的设备名时,选择配对连接;图2
3.连接成功,LED3指示灯常亮;图3
4.支持iOS设备9.3.0以上系统;
5.手机扫描二维码下载游戏平台,进入平台下载所需要的游戏。



方格果游戏平台 下载二维码

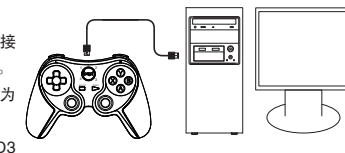
iOS按键映射功能:

- 1.支持iOS第三方游戏平台,如需更改按键功能,在游戏厅内操作手柄即可更改;
2.方格游戏平台与艾派特游戏平台映射方法:同时按下START+SELECT组合键调出映射菜单(图1);
3.将需要映射的按键,拖到相应的触摸键上与之重叠保存后即可操作游戏;
4.部分原生支持手柄的游戏不能调用映射菜单。



PC有线连接操作方法:

- 1.按住手柄START键使用包装附带的USB数据线直接与电脑USB接口连接。此时进入USB有线模式状态。
2.有线模式连接OK后,LED2指示灯常亮;此时为PS3模式。
3.需要长按ipega键三秒切换为360模式,此时LED3指示灯长亮。



蓝牙连接PC设备操作方法

- 1.(带蓝牙功能的电脑请直接跳至第4步)在手柄关机状态下,同时按住手柄的X键与ipega键搜索蓝牙设备,此时LED1-LED4指示灯同时快闪;
2.将蓝牙4.0以上接收器插入PC设备的USB接口,Windows系统会自动安装驱动程序;
3.驱动程序安装成功后,会在电脑的右下角显示蓝牙设备的符号;如下图1;
4.将鼠标移动到蓝牙符号处,单击鼠标右键,选择“添加设备”;如下图2;
5.选择“添加设备”后,会在对话框内搜索到设备的型号(PG-9078)图标;如下图3;
6.点击“下一步”,并选择“不使用代码进行配对”,确认后则会自动添加,提示蓝牙连接成功连接OK后,指示灯常亮!如下图4;
7.蓝牙连接成功后为360模拟器模式;支持以模拟器方式运行的游戏!



鼠标/多媒体功能

- 1.多媒体功能,需在鼠标模式下进行操作,可控制音乐播放;
2.设备与手柄配对连接成功后,短按ipega键可切换至鼠标模式;此时LED2灯亮;
3.在鼠标模式下,各按键功能如下(iOS系统设备因系统限制无线鼠标功能,多媒体功能可正常使用): Y键:音量+; A键:音量-; X键:上一曲; B键:下一曲; L2键:播放/暂停; L1键:鼠标左键; R2键:播放/暂停; R1键:鼠标右键;左3D:鼠标快移动;右3D:鼠标慢移动;
4.如需切换回游戏模式请短按ipega键。

操作使用模式:

Table with 2 columns: Android system and Windows system. Rows include pairing buttons (ipega+X for Android, ipega+Y for Windows), indicators (LED1, LED2, LED3), and notes about mode switching.

电性参数:

- 1.工作电压: DC3.7V
2.工作电流: 30mA
3.持续使用时:10H
4.静态电流: <35uA
5.充电电压/电流: DC5V/500mA
6.蓝牙传输距离: <=8M
7.电池容量: 380mAh
8.待机时间: 满电放置30天

手柄充电/休眠/唤醒功能:

- 1.手柄在没连接状态下充电时,4个LED指示灯同时慢闪,充电后熄灭!当在蓝牙连接状态下充电时,当前模式灯慢闪,充电后长亮!
2.睡眠/唤醒功能: 游戏手柄在5分钟内不使用会进入休眠状态,当需要重新使用时需按ipega键唤醒即可回连;
3.电池电量不足时,当前模式指示灯快闪提示;



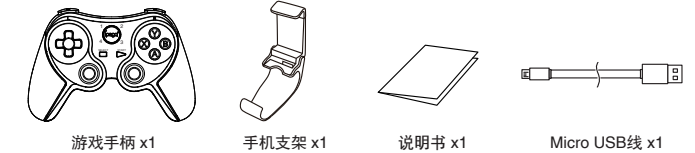
注意事项:

- 1.请不要把本产品放在潮湿或高温地方存储;
2.不要敲击、摔打、棒打、刺穿、或试图去分解本产品,以免对产品造成不必要的损害;
3.产品内置电池,请勿和垃圾一起丢弃;
4.不要在靠近火或其他热源的地方对手柄进行充电。
5.非专业人员请勿拆卸本产品,否则不在售后保修服务内;

常见问题:

- 问:为什么在iOS手机“App Store”里下载的游戏用手柄操控不了?
答:因iOS的协议限制,iOS的游戏需在游戏平台内下载游戏,平台内的游戏跟手柄适配的,之前已经下载的游戏要卸载,以免有冲突。
问:游戏时按键不受控,或混乱怎么办?
答:将手柄关机重新连接,连接过程中请不要碰触其它按键
问:手机蓝牙打开无法搜索到手柄?
答:1:取消掉手柄与手机之前的蓝牙配对设备名,重新开启手机蓝牙搜索配对
2:使用回形针按下手柄背面的复位孔
问:新手柄为什么不开机?
答:1:新手柄一般电量不足,请用包装盒内的USB线上5V充电器,给手柄充电,充满后再按开机键开机。
2:如果手柄接上电源(5V)后指示灯还是不亮,请用回形针按下手柄背面的复位孔

配件清单:



IPega与ePega 商标同属于 PEGA, LIMITED 所有。

ZL201730041694.8

正面

反面



Bluetooth Gamepad User Manual Instruction Manual(PG-9078)

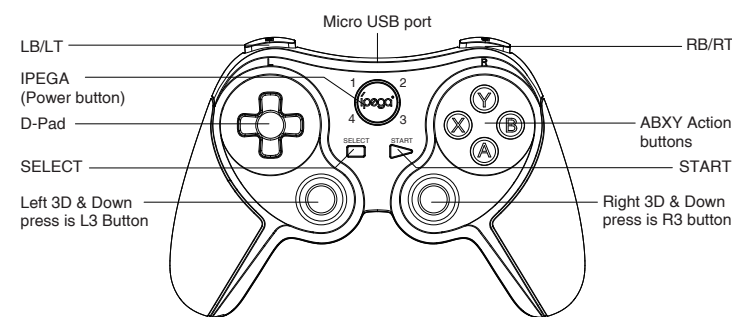
Applicable instructions

- 1.Thanks for purchasing iPega developed Bluetooth GamePad.
2.This product mainly compatible with Bluetooth enabled Android / Win 7 / Win 8 / Win 10 systems devices for gaming control.
3.Compatible with above systems Smart phone, tablet, Android Smart TV/TV box and Windows PC.
4.LT button and RT button have simulator function, much more focus on operating details, make games controlled exactly.

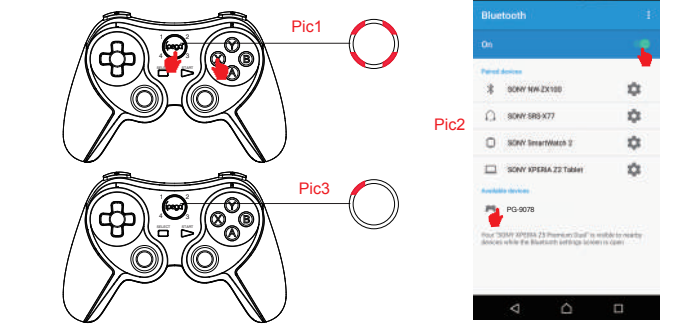
*Due to the official game platform software upgrades or source code changes and other resist factors caused some of the game can not be played or connected with our Gamepad, iPega company has no responsibility.iPega reserve the right of final interpretation for this.

* iOS devices (iPhone/iPad) has authorization limited, so currently for Chinese user only.

Introduction for key functions:



Usage of Android device



- 1. Press and hold X button + ipega button for 2 seconds at the same time, 4 LED indicator lights will blink simultaneously in a rapid manner at this moment.Refer Pic1
2.Open the Bluetooth on Android device, click searching, find and select “PG-9078” for Bluetooth pairing. Refer Pic2
3. LED1 lit on after Bluetooth connected. Refer Pic3
4.Then you are ready for playing games on Android devices.

Important notice for games capability in this mode:

- 1.Download simulator games from the third party Games App. Scan the QR code or input www.xiaoj001.com to your phone browser to download the Android Game Center App, there has vast of most popular available games supportable.
2.Download gamepad enabled games (similar console games as below) from Google Playstore which you can play directly. You can map button in the game settings for some of the game, such as ShadowGun. Recommend console game list: Implosion / Dead Trigger / Dead Effect / CS Portable / The dungeon hunter 4 glory palace / Shadowgun: DeadZone / SoulCraft - Action RPG
3.If you want play some of the online games such as PUBG, Mobile lenges, Rules of survival etc which downloaded from Google Playstore, then you need download the Octopus driver for buttons mapping, check the operation guide video on PEGA HK Youtube.



Scan to download Octopus Driver: www.xiaoj001.com Octopus Driver: http://www.phoenixs.com/octopus/intro

How to connect PC device for playing games by using USB data cable:

- 1. Hold on the START key on gamepad and connect gamepad to the computer's USB port via the USB cable. At this point entered the USB wired mode.
2. After the wired mode connected, the LED2 indicator is on; In this case, it is the PS3 mode, you can play games on Sony PS3.
3. Press the ipega key for three seconds to switch to x-input mode and playing of 360 games on PC. The LED3 indicator lights up once successful connected.

How to connect PC device with Bluetooth:

- 1. Press and hold ipega + X button for 2 seconds until LED flash quickly, which means game controller entered into Bluetooth searching.(If your PC has Bluetooth function, please go to step4)
2.Insert the Bluetooth 4.0 or above dongle (not in the package) into the USB interface on PC device; The driver will be installed by Windows system automatically.
3. After the driver is installed successfully,the symbol of the Bluetooth device will be displayed in the lower right corner of the computer.
4. Move the mouse to the Bluetooth symbol, click the right mouse button.and select “Add device”.
5. After selecting “Add device”, the device model (PG-9078) icon can be searched.
6. Click “next”, and select “Do not use the code to match”, it will be automatically added after confirmed, then remind the Bluetooth was connected! After connected, the indicator light is always on.
7. It will be D_INPUT mode after the Bluetooth is connected successfully and can support the games running in simulator way.

Mouse & Multimedia Function

- 1. Multimedia player function, need to operate in mouse mode;
2. After successful connection in HID mode, you can switch to mouse mode by short press ipega key; LED2 lights up at this time;
3. In mouse mode: Y key: volume +; A key: volume -; X key: previous song; B key: next song; L2 key: play/pause; L1 key: left mouse button; R2 key: play/pause; R1 key: Right mouse button; left 3D: mouse fast moving; right 3D: mouse slow moving
4. Short press ipega key if you want switch back to HID made from mouse mode.

Operation instructions:

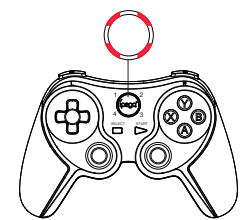
Table with 2 columns: Android system and Windows system. Rows include pairing buttons (ipega+X for Android, ipega+B for Windows), indicators (LED1, LED2, LED3, LED4), and remarks about mode switching.

Electrical Parameters:

- 1.Working voltage: DC3.7V
2.Working current: 30 mA
3.Consecutive Usage Hours: 10H
4.Static current: <35uA
5.Charging voltage/current: DC5V/500mA
6.Bluetooth transmission distance: <=8M
7.Battery capacity: 380mAh
8.Standby time: up to 30days once fully charged

Charge/ Sleep/ Wake up function of Gamepad:

- 1. When the gamepad is not connected to any device while it is charging, 4 LED indicator lights will slowly blink. When the charging is completed, the lights will be off! When the gamepad is connected to other device via Bluetooth while it is charging, the current mode light will slowly blink. When the charging is completed, the light will be on.
2. Sleep/Wake-Up Function: The game pad NOT be used within 5 minutes and it will enter into the sleep status. When you need to use it again, press the ipega key For 2 seconds and it will automatically return to wake-up status.
3. When the battery power is low, the current mode indicator light will blink rapidly.



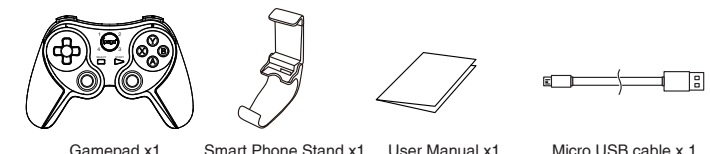
Notes:

- 1. Please do not store this product in wet or high-temperature areas.
2. Don't knap, beat, burn, pierce, or try to decompose this product, to avoid unnecessary damage to the product.
3. The product has built-in batteries, and please don't discard them together with the garbages.
4. Don't charge the controller in a place near the fire or other heat source.
5. Non professional personnel should not disassemble the product, otherwise it will not be covered in the after-sales warranty service.

Frequency asked question to operate this Gamepad

- Q1: I opened Bluetooth searching, but still can't pair it with my device?
A1: Please turn off and ignore the previous connected device. Then reopen Bluetooth for connect. If you still can't connect, then please use the needle press the RESET button on the back of Gamepad for 5 seconds. Then reconnect the Bluetooth.
Q2: I can't turn on the Gamepad.
A2: Please recharge the Gamepad before you use it at the first time or use it again after a long period. Please check the charge indicator light turn on while charging and will turn off once fully charged. If the Charge indicator do not light on while charge cable connected to the power source, then please try to change a charge cable or use the needle press the RESET button on the back of Gamepad for 5 seconds.
Q3: Joystick moving itself or other buttons works improper when entered the game.
A3: Please use the needle press the RESET button on the back of Gamepad for 5 seconds. Please be reminded don't touch wrong buttons while Bluetooth pairing.

Accessories List



IPega and ePega trademarks all belong to PEGA LIMITED.

ZL201730041694.8