

PG-9083说明书 80g米黄色特种纸,双面折页 尺寸: 735x142mm



伸缩蓝牙游戏手柄 (带Switch功能) 产品说明书(PG-9083)

适用说明:

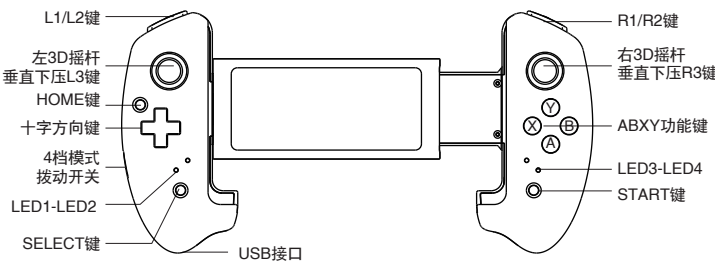
- 非常感谢您购买ipega公司开发生产的伸缩蓝牙游戏手柄;
 - 本产品适用于在Android/iOS/Switch/Wii 7/8/10系统上蓝牙连接时,进行游戏操作时使用!
 - 适用设备:智能手机/平板电脑/智能电视机、机顶盒/PC电脑。
 - 安卓系统支持多媒体功能:音量+、音量-、上一曲、播放/暂停、下一曲。
 - 产品带有超长伸缩功能,可调节,伸缩尺寸最大支持280mm的长度,非常适合在平板电脑上使用!
 - 结构符合人体工程学,手感舒适;
- * 因官方游戏平台软件升级或源代码变更等不可抗拒的因素造成部分游戏无法与本产品连接操作,我公司不承担任何责任,对此我公司保留最终解释权。

售后客服QQ群: 344494518
客服电话: 400-806-3006
在线时间: 周一至周五9:30-17:30

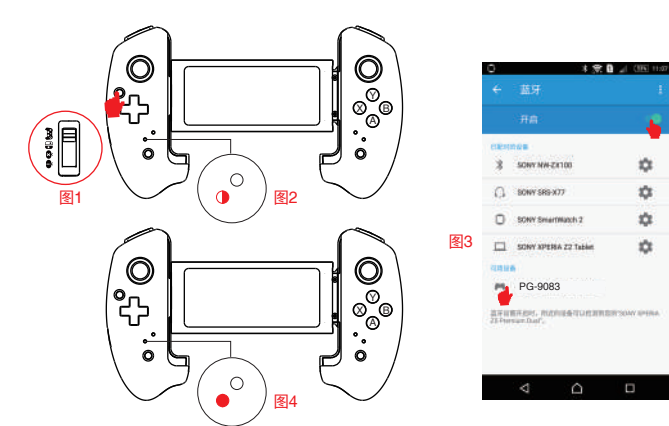


艾派格官方微信公众号
(关注并搜索 下载iOS模拟器大厅)

功能按键图示:



安卓设备使用说明:



- 将模式开关置于“”位置; 图1
- 按住HOME键3秒开机, 此时LED1指示灯快闪; 图2
- 将Android设备端的蓝牙功能打开, 点击“扫描”;
- 当搜索到蓝牙名为“PG-9083”的设备名时, 选择配对连接; 图3
- 连接成功, LED1常亮。 图4



安卓游戏平台 下载二维码
安卓按键映射APP 下载二维码

iOS游戏大厅模式



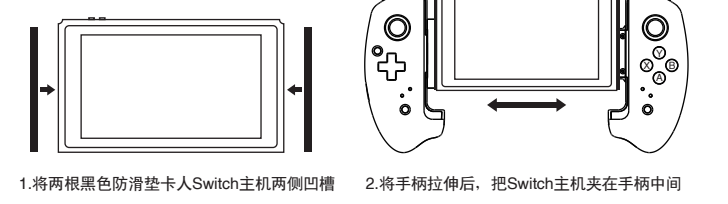
支持iOS非越狱设备,支持第三方游戏平台,此模式仅限中国大陆地区使用

- 将模式开关置于“”位置; 图1
- 长按HOME键3秒开机, 此时LED3指示灯快闪; 图2
- 将iOS设备端的蓝牙功能打开, 当搜索到蓝牙名为“Newgamepad N1”的设备名时, 选择配对连接; 图3
- 连接成功, LED3常亮。 图4
- 手机扫描二维码下载游戏平台, 进入平台下载所需要的游戏。

iOS按键映射功能:

- 支持iOS第三方游戏平台, 如需更改按键功能, 在游戏厅内操作手柄即可更改;
- 艾派格游戏大厅映射方法: 同时按下START-SELECT组合键退出映射菜单 (如图1);
- 方块游戏平台映射方法: 同时按下L3-SELECT组合键退出映射菜单 (如图2);
- 将需要映射的按键, 拖到相应的触摸功能键上与之重叠保存后, 即可默认为360模式;
- 部分原生支持手柄的游戏不能调用映射菜单。

Switch模式操作说明:



- 将两根黑色防滑垫卡入Switch主机两侧凹槽
- 将手柄拉伸后, 把Switch主机夹在手柄中间

- *在Switch游戏中, 不支持震动及3D感应功能。
*HOME键有三个功能: 短按1秒松开为截图功能; 短按2秒松开为返回功能; 短按3秒松开为回到主机设置界面。
1. 将模式开关置于“”位置。
2. 按HOME键3秒开机, 此时LED1-LED4跑马闪灯。
3. 进入主机主界面, 再进入按键界面, 如下图。
4. 蓝牙连接和配对; 主机自动分配。
5. 配对上, LED1-LED4其中一个灯常亮。如果没有其它手柄连接, 默认是LED1常亮。
6. 用SELECT键为“-”, 用START键为“+”
7. Switch主机截屏键: 快速短按HOME键。

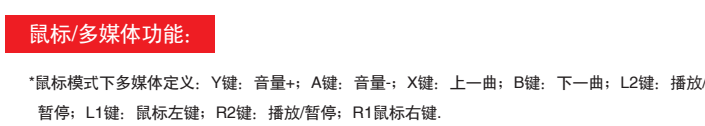


PC有线连接操作方法:

- *MICRO USB数据线接入电脑再插手柄, 一插上会检测充电的状态, LED1-LED4闪灯。当识别到PC连接后为360模式, 会同时给手柄充电, 此时LED1为闪灯状态, 当手柄充满电后, LED1为常亮。
1. 通过MICRO USB数据线将手柄与电脑连接, 无需安装驱动即可连接!
2. 连接OK默认为360模式;
3. 推荐游戏: 极品飞车

蓝牙连接PC设备操作方法:

- (带蓝牙功能的电脑请直接跳至第4步)手柄关机状态下, 将模式开关置于“”位置, 按住HOME 3秒开机。
- 将蓝牙4.0接收器插入PC设备的USB接口, WINDOWS系统会自动安装驱动程序;
- 驱动程序安装成功后, 会在电脑的右下角显示蓝牙设备的符号; 如图1
- 将鼠标移动到蓝牙符号处, 单击鼠标右键, 选择“添加设备”如图2
- 选择“添加设备”后, 会在对话框内搜索到设备的型号 (PG-9083) 图标; 如图3
- 点击“下一步”, 并选择“不使用代码进行配对”, 确认后则会自动添加, 提示蓝牙连接成功! 连接OK后, 指示灯常亮!
- 蓝牙连接成功后为360模拟器模式, 支持以模拟模式方式运行的游戏!



鼠标/多媒体功能:

- *鼠标模式下多媒体键: Y键: 音量+; A键: 音量-; X键: 上一曲; B键: 下一曲; L2键: 播放/暂停; L1键: 鼠标左键; R2键: 播放/暂停; R1鼠标右键。
*左3D为鼠标快速移动功能, 右3D为鼠标慢速移动功能; Select为返回功能键, L1为鼠标确认键。
1. 将模式开关置于“”位置;
2. 按住HOME键3秒开机, 此时LED1指示灯快闪;
3. 将Android设备端的蓝牙功能打开, 点击“扫描”;
4. 当搜索到蓝牙名为“PG-9083”的设备名时, 选择配对连接;
5. 连接成功, LED1常亮。
6. 按Y+HOME切换为鼠标模式, 切换成功LED1+LED2常亮。

手柄充电/休眠/唤醒功能:

- 充电时LED1-LED4闪亮, 充满后熄灭!
- 休眠/唤醒功能: 游戏手柄在5分钟内不使用时会自动进入休眠状态, 当需要重新使用时需按HOME键唤醒即可回连;
- 电量不足时, 在当前模式的LED灯快闪提示。

操作使用模式:

操作系统	Android 系统	Switch 系统
模式	安卓标准游戏模式	鼠标模式
开关位置		
模式配对 (长按2秒)	长按HOME键3秒	Y+HOME
指示灯	LED1	LED1+LED2
回连	各个系统第一次配对成功后, 下次在相同的设备, 相同的开关位置, 按2秒推回回连	系统自动分配
备注	动态切换: 安卓标准游戏连接模式下, 按Y+HOME切换为鼠标模式, 按X+HOME切换安卓标准模式	LED1-LED4跑马闪灯

操作系统	iOS 系统	Windows 系统
模式	iOS游戏大厅模式	360模拟器模式
开关位置		
模式配对 (长按2秒)	长按HOME键3秒	长按HOME键3秒
指示灯	LED3	LED1
回连	各个系统第一次配对成功后, 下次在相同的设备, 相同的开关位置, 按2秒推回回连	
备注	支持iOS非越狱设备	需蓝牙适配器 (建议使用蓝牙4.0以上版本)

电性参数:

- 工作电压: DC3.7V
- 工作电流: 30mA
- 持续使用时间: 10H
- 静态电流: <30uA
- 充电电压/电流: DC5V/500mA
- 电池容量: 380mAh
- 蓝牙传输距离: <8M
- 待机时间: 长达30天

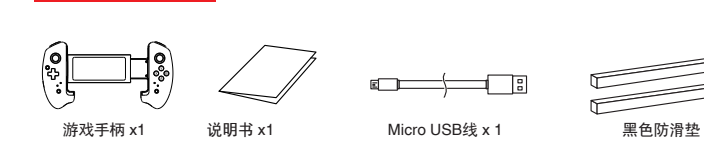
注意事项:

- 请不要把本产品在潮湿或高温地方存放;
- 不要敲击、拍打、棒打、刺穿、或试图去分解本产品, 以免对产品造成不必要的损害;
- 产品内置电池, 请勿和垃圾一起丢弃;
- 不要在靠近火或其它热源的地方对手柄进行充电。
- 非专业人员误拆本产品, 否则不在售后保修服务内;
- 因官方软件升级或源代码变更等不可抗拒的因素造成部分游戏无法与本产品连接操作, 我公司不承担任何责任, 对此我公司保留最终解释权。

常见问题:

- 问: 为什么在iOS手机“App Store”里下载的游戏用手柄操控不了?
答: 因iOS的协议限制, iOS的游戏需在游戏平台内下载游戏, 平台内的游戏跟手柄适配过的 (之前已经下载的游戏要卸载, 以免有冲突)。
- 问: 游戏时按键不受控, 或混乱怎么办?
答: 将手柄关机重新连接, 连接过程中请不要触碰其它按键
- 问: 手机蓝牙打不开无法搜索到手柄?
答: 1. 取消手柄与手机之前的蓝牙配对设备名, 重新开启手机蓝牙搜索配对
2. 使用回形针按下手柄背面的复位孔
- 问: 新手柄为什么不开机?
答: 1. 新手柄一般电量不足, 请用包装盒内的USB线接上5V充电器, 给手柄充电, 充满电后再开机即可。
2. 如果手柄接上电源(OV)后指示灯还是亮, 请用回形针按下手柄背面的复位孔

产品清单:



iPega 与 ePega 商标 同属于 PEGA LIMITED 所有。

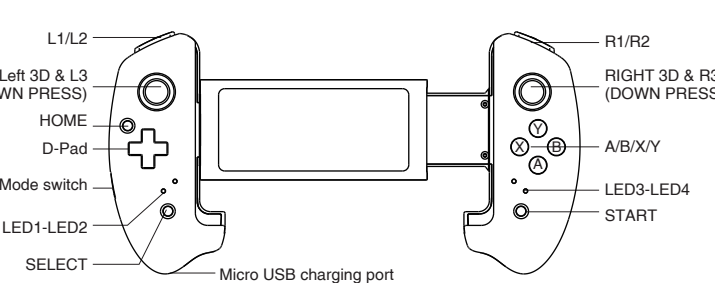


Retractable Game Controller Instruction Manual(PG-9083)

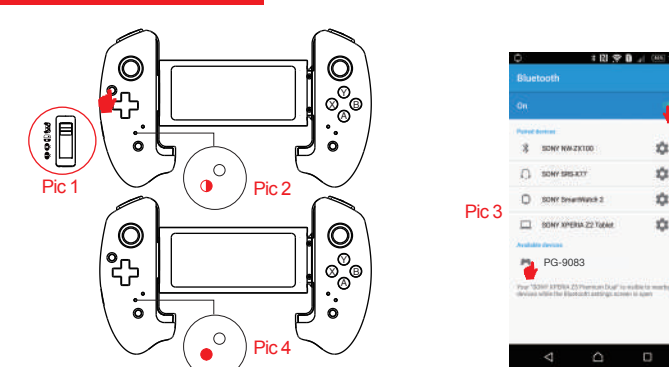
Applicable instructions

- Thanks for purchasing iPega developed Retractable Bluetooth GamePad.
 - This Gamepad support playing games on Nintendo Switch, Bluetooth enabled Android tablet/smart phone/ TV box/ smart TV/ VR, Win7/ Win10 PC without any drivers.
 - Multimedia player buttons "volume +, -, last, "next "Play / Pause" can be used under Android system devices.
 - With extending tablet holder, maximum extending size up to 280mm, better fit for playing games on large size tablets.
 - Ergonomic streaming and comfortable hand hold feelings.
- * Due to the official game platform software upgrades or source code changes and other not resist factors caused some of the game can not be played or connected with our Gamepad, iPega company has no responsibility. iPega reserve the right of final interpretation for this.
- * iOS devices (iPhone/iPad) has authorization limited, so currently for Chinese user only.

Introduction for key functions:



Usage of Android HID Mode



- Pull the mode switch to position; Pic 1
- Press HOME for 3 seconds, LED1 indicator flash quickly; Pic 2
- Open the Bluetooth on Android device, click searching
- Find and select "PG-9083" for Bluetooth pairing; Pic 3
- LED1 lit on after Bluetooth connected; Pic 4

Important notice for games capability in this mode:

- Download simulator games from the third party Games App. Scan the QR code or input www.xiaoj001.com to your phone browser to download the Android Game Center App, there has vast of most popular available games supporttable.
- Download gamepad enabled games (similar console games as below) from Google Playstore which you can play directly. You can map button in the game settings for some of the game, such as ShadowGun. Recommend console game list: Implosion / Dead Trigger / Dead Effect / CS Portable / The dungeon hunter 4 glory palace / Shadowgun: DeadZone / SoulCraft - Action RPG.
- If you want play some of the online games such as PUBG, Mobile legends, Rules of survival etc which downloaded from Google Playstore, then you need download the Octopus driver for buttons mapping, check the operation guide video on PEGA HK Youtube.

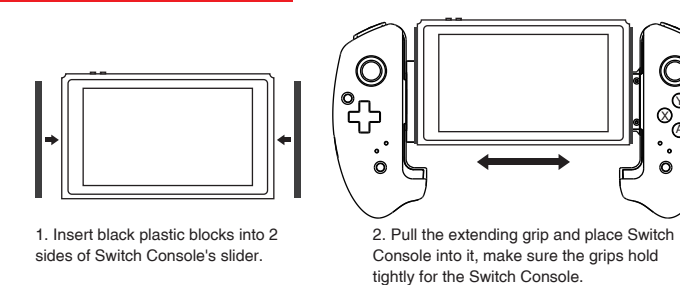


www.xiaoj001.com



Octopus Driver: <http://www.phoenixs.com/octopus/intro>

Usage of Nintendo Switch Mode



- Insert black plastic blocks into 2 sides of Switch Console's slider.
 - Pull the extending grip and place Switch Console into it, make sure the grips hold lightly for the Switch Console.
- Home button has 3 functions: press 1 second for screenshot; press 2 seconds for back function, press 3 seconds to enter switch setting interface.
- Pull the mode switch to position;
 - Press HOME for 3 seconds, LED1-LED4 indicator marquee flash.
 - Enter Switch main interface, then enter key input interface, as below pics.
 - Bluetooth connection and pairing: Console assign automatically.
 - One of LED1-LED4 lit on while successful paired. Default LED1 lit on if there is no other gamepad connected.
 - Select button function is "+"
 - Start button function is "+"
 - Press HOME button shortly for Switch Console screenshot.



USB Data Cable wired connect to PC

- *Plug MICRO USB data cable into computer, then connect gamepad, it will detect charging status while connected, LED1-LED4 flash. While gamepad detected PC mode is X_INPUT mode, gamepad will be charging at the same time, LED1 flash; LED1 lit on while fully charged.
- Connect Gamepad to PC through MICRO USB data cable, no need install drivers.
 - Default X_INPUT mode after successfully connected
 - X_INPUT Recommended game: Need for Speed

Wireless Bluetooth connect to PC

- * If your PC don't have Bluetooth function, then you required to purchase a Bluetooth Dongle for Bluetooth connection.
- Pull the mode switch to position at power off stage, Press HOME button 3 seconds to power on. (If your PC has Bluetooth function, please go to step 4)
 - Insert the Bluetooth 4.0 Dongle (not in the package) into the USB interface on PC device; The driver will be installed by Windows system automatically;
 - After the driver is installed successfully, the symbol of the Bluetooth device will be displayed in the lower right corner of the computer.
 - Move the mouse to the Bluetooth symbol, click the right mouse button, and select "Add device".
 - After selecting "Add device", the device model (PG-9083) icon can be searched.
 - Click "next", and select "Do not use the code to match", it will be automatically added after confirmed; then remind "the Nintendo was connected! After connected, the indicator light is always on.
 - It will be D_INPUT mode after Bluetooth connected successfully and can support the games running in similar way.

Usage of Android Mouse Mode

- The multimedia player function will only operate under the mouse mode. In the Mouse Mode: Y key: Volume +; A key: Volume -; X key: Previous song; B key: Next song; L2 key: Play/Pause; L1 key: Left mouse key; R2 key: Play / Pause; R1 key: Right mouse key; Left 3D: Mouse moving quickly; Right 3D: Mouse moving slowly; Select key: Back; L1 key: confirm
- Pull the mode switch to position;
 - Press HOME for 3 seconds, LED1 indicator flash quickly.
 - Open the Bluetooth on Android device, click searching.
 - Find and select "PG-9083" for Bluetooth pairing.
 - LED1 lit on after Bluetooth connected.
 - Press "Y+Home" buttons switch to Mouse Mode from HID Mode.
 - LED1+LED2 lit on while switched to mouse mode successfully.

Gamepad Charging/Sleep Mode/Wake-Up Function:

- LED1-LED4 blink while charging, the LED lights will be off while fully charged.
- Sleep/Wake-Up Function: The gamepad is not being used within 6 minutes and it will enter into the sleeping mode. When you need to use it again, press the HOME button and it will automatically wake-up for reconnect.
- When the battery power is low, the current mode indicator light will blink rapidly.

Operation instructions:

Mode	Android system (HID Gamepad Mode)		Nintendo Switch
	Mouse Mode	Game Mode	
Mode Switch Location			
Bluetooth pairing buttons	Press HOME for 3 seconds	Y+HOME	Press HOME for 3 seconds
Indicator	LED1	LED1+LED2	System automatically assign
Reconnection	Press HOME button for 2 seconds for reconnect while at the same device and same mode		
Remark	Under HID mode, press "Y+HOME switch to HID mode		LED1-LED4 marquee flash

Mode	Windows system	
	D-input (GamePad)	X-input Mode
Mode Switch Location		
Bluetooth pairing buttons	Press HOME for 3 seconds	Connect Gamepad to PC by data cable
Indicator	LED1	LED1
Reconnection	Press HOME button for 2 seconds for reconnect while at the same device and same mode	
Remark	Need buy a USB Bluetooth receiver (suggest Bluetooth 4.0+ version)	

Electrical Parameters:

- Working voltage: DC3.7V
- Working current: 30 mA
- Consecutive Usage Hours: 10H
- Sleep mode current: <30uA
- Charging voltage/current: DC5V/500mA
- Battery capacity: 380mAh
- Bluetooth transmission distance: <8M
- Standby time: up to 30days once fully charged

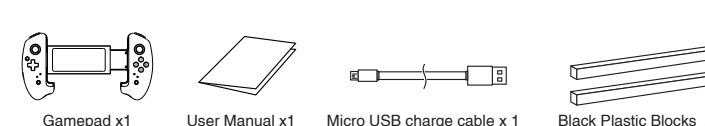
Notes:

- Please do not store this product in wet or high-temperature areas.
- Don't knob, beat, drub, pierce, or try to decompose this product, to avoid unnecessary damage to the product.
- The product has built-in batteries, and please don't discard them together with the garbages.
- Don't charge the controller in a place near the fire or other heat source.
- Non professional personnel should not disassemble the product, otherwise it will not be covered in the after-sales warranty service.
- Due to the official game platform software upgrades or source code changes and other not resist factors caused some of the game can not be played or connected with our Gamepad, iPega company has no responsibility. iPega reserve the right of final interpretation for this.

Frequency asked question to operate this Gamepad

- Q1: I opened Bluetooth searching, but still can't pair it with my device?
A1: Please turn off and ignore the previous connected device. Then reopen Bluetooth for connect. If you still can't connect, then please use the needle press the RESET button on the back of Gamepad for 5 seconds. Then reconnect the Bluetooth.
- Q2: I can't turn on the Gamepad.
A2: Please recharge the Gamepad before you use it at the first time or use it again after a long period. Please check the charge indicator light turn on while charging and will turn off once fully charged. If the Charge indicator do not light on while charge cable connected to the power source, then please try to change a charge cable or use the needle press the RESET button on the back of Gamepad for 5 seconds.
- Q3: Joystick moving itself or other buttons works improper when entered the game.
A3: Please use the needle press the RESET button on the back of Gamepad for 5 seconds. Please be reminded don't touch wrong buttons while Bluetooth pairing.

Accessories List



iPega 与 ePega 商标 同属于 PEGA LIMITED 所有。